



www.billbeall.com

3626 S. Campbell
Springfield, MO 65807

8,190 SF RETAIL SPACE - FOR LEASE



HIGHLIGHTS

- 8,190 SF END CAP - Retail Space
- Open Floor Plan
- Abundance of Natural Light
- Traffic Count: 38,984 (Campbell S. of Powell)
- Located on S. Campbell in the Kickapoo Corners Shopping Center
- Lease Rate: \$14.50 / SF (\$9,897.00 / Month)
- NNN : \$2.85 / SF (\$1,945.00 / Month)
- Estimated Monthly Payment: \$11,842.00

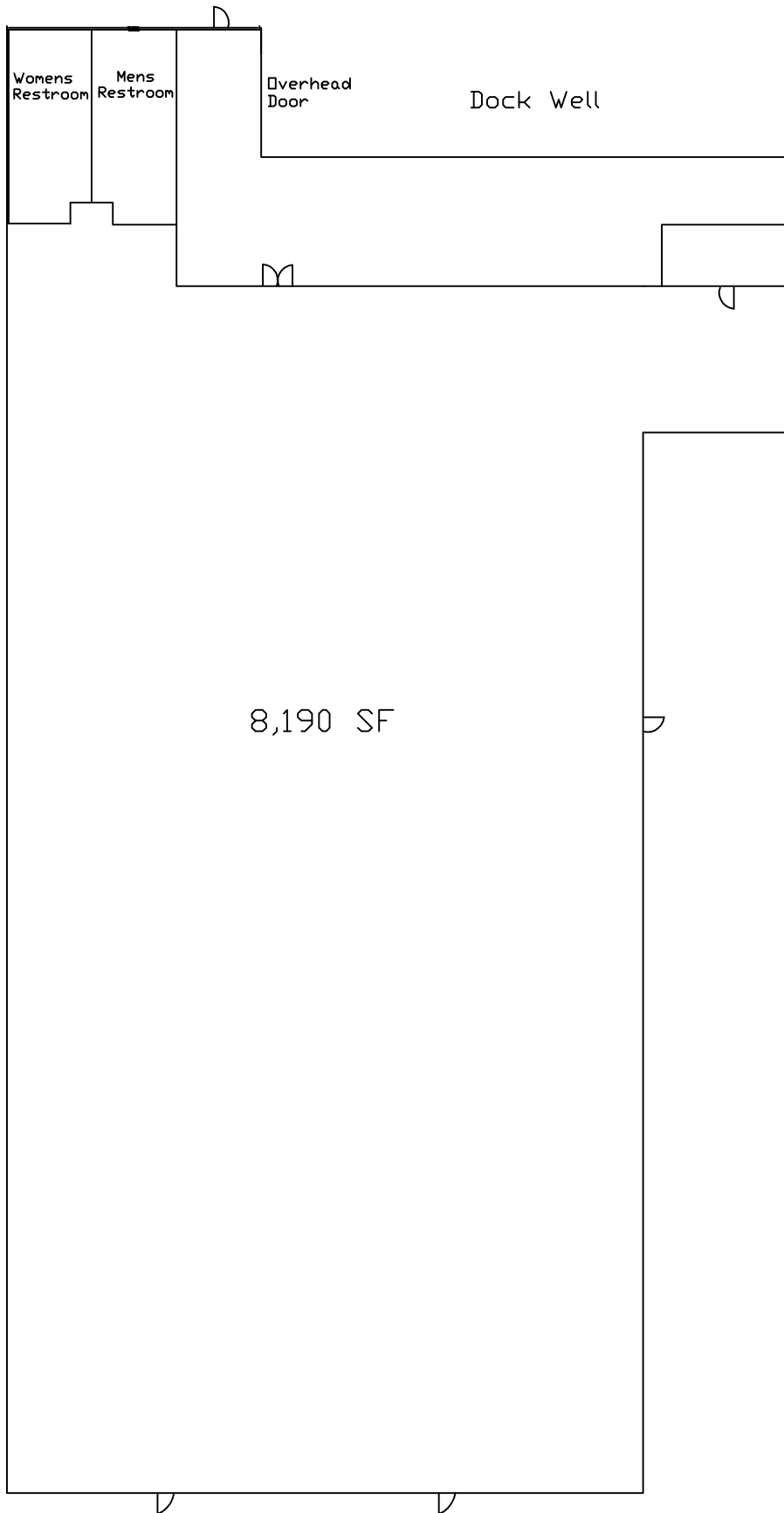


FOR ADDITIONAL INFORMATION PLEASE CONTACT

Bill Beall Co., Inc.

2921 S. National Ave., Springfield, MO 65804

(417) 887-5535 email: beall@billbeall.com



3626 S. CAMPBELL



Business Summary

3626 S Campbell Ave, Springfield, Missouri, 65807
Rings: 1, 3, 5 mile radii

Prepared by Esri
Latitude: 37.14815
Longitude: -93.29585

	1 mile		3 miles		5 miles	
	Number	Percent	Number	Percent	Number	Percent
Data for all businesses in area						
Total Businesses:	732		4,609		8,348	
Total Employees:	15,417		83,221		148,532	
Total Residential Population:	8,746		74,415		166,526	
Employee/Residential Population Ratio (per 100 Residents)	176		112		89	
by SIC Codes	Number	Percent	Number	Percent	Number	Percent
Agriculture & Mining	9	1.2%	34	0.2%	74	1.6%
Construction	21	2.9%	78	0.5%	195	4.2%
Manufacturing	8	1.1%	33	0.2%	65	1.4%
Transportation	12	1.6%	169	1.1%	78	1.7%
Communication	12	1.6%	115	0.7%	65	1.4%
Utility	0	0.0%	0	0.0%	4	0.1%
Wholesale Trade	13	1.8%	64	0.4%	111	2.4%
Retail Trade Summary	175	23.9%	3,730	24.2%	1,085	23.5%
Home Improvement	5	0.7%	48	0.3%	31	0.7%
General Merchandise Stores	3	0.4%	461	3.0%	40	0.9%
Food Stores	16	2.2%	483	3.1%	97	2.1%
Auto Dealers, Gas Stations, Auto Aftermarket	29	4.0%	1,332	8.6%	98	2.1%
Apparel & Accessory Stores	12	1.6%	40	0.3%	113	2.5%
Furniture & Home Furnishings	12	1.6%	111	0.7%	82	1.8%
Eating & Drinking Places	58	7.9%	1,040	6.7%	331	7.2%
Miscellaneous Retail	40	5.5%	215	1.4%	293	6.4%
Finance, Insurance, Real Estate Summary	107	14.6%	818	5.3%	709	15.4%
Banks, Savings & Lending Institutions	26	3.6%	396	2.6%	140	3.0%
Securities Brokers	13	1.8%	42	0.3%	101	2.2%
Insurance Carriers & Agents	35	4.8%	133	0.9%	219	4.8%
Real Estate, Holding, Other Investment Offices	32	4.4%	247	1.6%	249	5.4%
Services Summary	344	47.0%	10,308	66.9%	1,993	43.2%
Hotels & Lodging	3	0.4%	49	0.3%	24	0.5%
Automotive Services	12	1.6%	119	0.8%	73	1.6%
Motion Pictures & Amusements	18	2.5%	180	1.2%	140	3.0%
Health Services	92	12.6%	7,627	49.5%	451	9.8%
Legal Services	21	2.9%	93	0.6%	109	2.4%
Education Institutions & Libraries	10	1.4%	335	2.2%	66	1.4%
Other Services	189	25.8%	1,905	12.4%	1,132	24.6%
Government	3	0.4%	55	0.4%	31	0.7%
Unclassified Establishments	29	4.0%	12	0.1%	198	4.3%
Totals	732	100.0%	15,417	100.0%	4,609	100.0%

	1 mile		3 miles		5 miles	
	Number	Percent	Number	Percent	Number	Percent
Businesses	74	1.6%	419	5.0%	159	1.9%
Employees	287	0.3%	1,319	1.6%	287	0.3%
Number	956	0.6%	2,940	2.0%	956	0.6%
Percent	1.9%		5.0%		1.9%	
Businesses	159	1.9%	419	5.0%	159	1.9%
Employees	287	0.3%	1,319	1.6%	287	0.3%
Number	956	0.6%	2,940	2.0%	956	0.6%
Percent	1.9%		5.0%		1.9%	
Businesses	159	1.9%	419	5.0%	159	1.9%
Employees	287	0.3%	1,319	1.6%	287	0.3%
Number	956	0.6%	2,940	2.0%	956	0.6%
Percent	1.9%		5.0%		1.9%	
Businesses	159	1.9%	419	5.0%	159	1.9%
Employees	287	0.3%	1,319	1.6%	287	0.3%
Number	956	0.6%	2,940	2.0%	956	0.6%
Percent	1.9%		5.0%		1.9%	
Businesses	159	1.9%	419	5.0%	159	1.9%
Employees	287	0.3%	1,319	1.6%	287	0.3%
Number	956	0.6%	2,940	2.0%	956	0.6%
Percent	1.9%		5.0%		1.9%	
Businesses	159	1.9%	419	5.0%	159	1.9%
Employees	287	0.3%	1,319	1.6%	287	0.3%
Number	956	0.6%	2,940	2.0%	956	0.6%
Percent	1.9%		5.0%		1.9%	
Businesses	159	1.9%	419	5.0%	159	1.9%
Employees	287	0.3%	1,319	1.6%	287	0.3%
Number	956	0.6%	2,940	2.0%	956	0.6%
Percent	1.9%		5.0%		1.9%	
Businesses	159	1.9%	419	5.0%	159	1.9%
Employees	287	0.3%	1,319	1.6%	287	0.3%
Number	956	0.6%	2,940	2.0%	956	0.6%
Percent	1.9%		5.0%		1.9%	
Businesses	159	1.9%	419	5.0%	159	1.9%
Employees	287	0.3%	1,319	1.6%	287	0.3%
Number	956	0.6%	2,940	2.0%	956	0.6%
Percent	1.9%		5.0%		1.9%	
Businesses	159	1.9%	419	5.0%	159	1.9%
Employees	287	0.3%	1,319	1.6%	287	0.3%
Number	956	0.6%	2,940	2.0%	956	0.6%
Percent	1.9%		5.0%		1.9%	
Businesses	159	1.9%	419	5.0%	159	1.9%
Employees	287	0.3%	1,319	1.6%	287	0.3%
Number	956	0.6%	2,940	2.0%	956	0.6%
Percent	1.9%		5.0%		1.9%	
Businesses	159	1.9%	419	5.0%	159	1.9%
Employees	287	0.3%	1,319	1.6%	287	0.3%
Number	956	0.6%	2,940	2.0%	956	0.6%
Percent	1.9%		5.0%		1.9%	
Businesses	159	1.9%	419	5.0%	159	1.9%
Employees	287	0.3%	1,319	1.6%	287	0.3%
Number	956	0.6%	2,940	2.0%	956	0.6%
Percent	1.9%		5.0%		1.9%	
Businesses	159	1.9%	419	5.0%	159	1.9%
Employees	287	0.3%	1,319	1.6%	287	0.3%
Number	956	0.6%	2,940	2.0%	956	0.6%
Percent	1.9%		5.0%		1.9%	
Businesses	159	1.9%	419	5.0%	159	1.9%
Employees	287	0.3%	1,319	1.6%	287	0.3%
Number	956	0.6%	2,940	2.0%	956	0.6%
Percent	1.9%		5.0%		1.9%	
Businesses	159	1.9%	419	5.0%	159	1.9%
Employees	287	0.3%	1,319	1.6%	287	0.3%
Number	956	0.6%	2,940	2.0%	956	0.6%
Percent	1.9%		5.0%		1.9%	
Businesses	159	1.9%	419	5.0%	159	1.9%
Employees	287	0.3%	1,319	1.6%	287	0.3%
Number	956	0.6%	2,940	2.0%	956	0.6%
Percent	1.9%		5.0%		1.9%	
Businesses	159	1.9%	419	5.0%	159	1.9%
Employees	287	0.3%	1,319	1.6%	287	0.3%
Number	956	0.6%	2,940	2.0%	956	0.6%
Percent	1.9%		5.0%		1.9%	
Businesses	159	1.9%	419	5.0%	159	1.9%
Employees	287	0.3%	1,319	1.6%	287	0.3%
Number	956	0.6%	2,940	2.0%	956	0.6%
Percent	1.9%		5.0%		1.9%	
Businesses	159	1.9%	419	5.0%	159	1.9%
Employees	287	0.3%	1,319	1.6%	287	0.3%
Number	956	0.6%	2,940	2.0%	956	0.6%
Percent	1.9%		5.0%		1.9%	
Businesses	159	1.9%	419	5.0%	159	1.9%
Employees	287	0.3%	1,319	1.6%	287	0.3%
Number	956	0.6%	2,940	2.0%	956	0.6%
Percent	1.9%		5.0%		1.9%	
Businesses	159	1.9%	419	5.0%	159	1.9%
Employees	287	0.3%	1,319	1.6%	287	0.3%
Number	956	0.6%	2,940	2.0%	956	0.6%
Percent	1.9%		5.0%		1.9%	
Businesses	159	1.9%	419	5.0%	159	1.9%
Employees	287	0.3%	1,319	1.6%	287	0.3%
Number	956	0.6%	2,940	2.0%	956	0.6%
Percent	1.9%		5.0%		1.9%	
Businesses	159	1.9%	419	5.0%	159	1.9%
Employees	287	0.3%	1,319	1.6%	287	0.3%
Number	956	0.6%	2,940	2.0%	956	0.6%
Percent	1.9%		5.0%		1.9%	
Businesses	159	1.9%	419	5.0%	159	1.9%
Employees	287	0.3%	1,319	1.6%	287	0.3%
Number	956	0.6%	2,940	2.0%	956	0.6%
Percent	1.9%		5.0%		1.9%	
Businesses	159	1.9%	419	5.0%	159	1.9%
Employees	287	0.3%	1,319	1.6%	287	0.3%
Number	956	0.6%	2,940	2.0%	956	0.6%
Percent	1.9%		5.0%		1.9%	
Businesses	159	1.9%	419	5.0%	159	1.9%
Employees	287	0.3%	1,319	1.6%	287	0.3%
Number	956	0.6%	2,940	2.0%	956	0.6%
Percent	1.9%		5.0%		1.9%	
Businesses	159	1.9%	419	5.0%	159	1.9%
Employees	287	0.3%	1,319	1.6%	287	0.3%
Number	956	0.6%	2,940	2.0%	956	0.6%
Percent	1.9%		5.0%		1.9%	
Businesses	159	1.9%	419	5.0%	159	1.9%
Employees	287	0.3%	1,319	1.6%	287	0.3%
Number	956	0.6%	2,940	2.0%	956	0.6%
Percent	1.9%		5.0%		1.9%	
Businesses	159	1.9%	419	5.0%	159	1.9%
Employees	287	0.3%	1,319	1.6%	287	0.3%
Number	956	0.6%	2,940	2.0%	956	0.6%
Percent	1.9%		5.0%		1.9%	
Businesses	159	1.9%	419	5.0%	159	1.9%
Employees	287	0.3%	1,319	1.6%	287	0.3%
Number	956	0.6%	2,940	2.0%	956	0.6%
Percent	1.9%		5.0%		1.9%	
Businesses	159	1.9%	419	5.0%	159	1.9%
Employees	287	0.3%	1,319	1.6%	287	0.3%
Number	956	0.6%	2,940	2.0%	956	0.6%
Percent	1.9%		5.0%		1.9%	
Businesses	159	1.9%	419	5.0%	159	1.9%
Employees	287	0.3%	1,319	1.6%	287	0.3%
Number	956	0.6%	2,940	2.0%	956	0.6%
Percent	1.9%		5.0%		1.9%	
Businesses	159	1.9%	419	5.0%	159	1.9%
Employees	287	0.3%	1,319	1.6%	287	0.3%
Number	956	0.6%	2,940	2.0%	956	0.6%
Percent	1.9%		5.0%		1.9%	
Businesses	159	1.9%	419	5.0%	159	1.9%
Employees	287	0.3%	1,319	1.6%	287	0.3%
Number	956	0.6%	2,940	2.0%	956	0.6%
Percent	1.9%		5			



Business Summary

3626 S Campbell Ave, Springfield, Missouri, 65807
Rings: 1, 3, 5 mile radii

Prepared by Esri
Latitude: 37.14815
Longitude: -93.29585

by NAICS Codes	Businesses		Employees		Businesses		Employees		Businesses		Employees	
	Number	Percent	Number	Percent	Number	Percent	Number	Percent	Number	Percent	Number	Percent
Agriculture, Forestry, Fishing & Hunting	1	0.1%	3	0.0%	6	0.1%	20	0.0%	22	0.3%	258	0.2%
Mining	1	0.1%	4	0.0%	3	0.1%	14	0.0%	4	0.0%	26	0.0%
Utilities	0	0.0%	0	0.0%	2	0.0%	383	0.5%	8	0.1%	532	0.4%
Construction	24	3.3%	123	0.8%	220	4.8%	1,474	1.8%	458	5.5%	3,152	2.1%
Manufacturing	11	1.5%	49	0.3%	77	1.7%	1,293	1.6%	196	2.3%	4,933	3.3%
Wholesale Trade	13	1.8%	62	0.4%	107	2.3%	1,744	2.1%	246	2.9%	4,892	3.3%
Retail Trade	111	15.2%	2,604	16.9%	723	15.7%	13,995	16.8%	1,201	14.4%	20,962	14.1%
Motor Vehicle & Parts Dealers	24	3.3%	1,303	8.5%	78	1.7%	2,089	2.5%	172	2.1%	4,152	2.8%
Furniture & Home Furnishings Stores	10	1.4%	105	0.7%	47	1.0%	426	0.5%	71	0.9%	557	0.4%
Electronics & Appliance Stores	2	0.3%	6	0.0%	34	0.7%	296	0.4%	47	0.6%	354	0.2%
Bldg Material & Garden Equipment & Supplies Dealers	5	0.7%	48	0.3%	31	0.7%	581	0.7%	74	0.9%	1,007	0.7%
Food & Beverage Stores	11	1.5%	398	2.6%	66	1.4%	1,229	1.5%	127	1.5%	3,456	2.3%
Health & Personal Care Stores	14	1.9%	100	0.6%	89	1.9%	1,190	1.4%	121	1.4%	1,661	1.1%
Gasoline Stations	5	0.7%	29	0.2%	20	0.4%	112	0.1%	37	0.4%	211	0.1%
Clothing & Clothing Accessories Stores	13	1.8%	44	0.3%	138	3.0%	1,284	1.5%	174	2.1%	1,601	1.1%
Sport Goods, Hobby, Book, & Music Stores	7	1.0%	29	0.2%	62	1.3%	2,996	3.6%	95	1.1%	3,281	2.2%
General Merchandise Stores	3	0.4%	461	3.0%	40	0.9%	3,017	3.6%	67	0.8%	3,498	2.4%
Miscellaneous Store Retailers	14	1.9%	79	0.5%	108	2.3%	765	0.9%	190	2.3%	1,112	0.7%
Nonstore Retailers	2	0.3%	2	0.0%	11	0.2%	10	0.0%	27	0.3%	73	0.0%
Transportation & Warehousing	3	0.4%	130	0.8%	37	0.8%	438	0.5%	86	1.0%	1,187	0.8%
Information	18	2.5%	168	1.1%	111	2.4%	2,038	2.4%	226	2.7%	4,909	3.3%
Finance & Insurance	75	10.2%	573	3.7%	467	10.1%	3,639	4.4%	698	8.4%	5,443	3.7%
Central Bank/Credit Intermediation & Related Activities	27	3.7%	397	2.6%	141	3.1%	1,830	2.2%	209	2.5%	2,454	1.7%
Securities, Commodity Contracts & Other Financial	13	1.8%	43	0.3%	106	2.3%	568	0.7%	149	1.8%	1,001	0.7%
Insurance Carriers & Related Activities; Funds, Trusts &	35	4.8%	133	0.9%	220	4.8%	1,241	1.5%	340	4.1%	1,988	1.3%
Real Estate, Rental & Leasing	48	6.6%	265	1.7%	289	6.3%	3,206	3.9%	545	6.5%	4,559	3.1%
Professional, Scientific & Tech Services	87	11.9%	533	3.5%	464	10.1%	3,288	4.0%	895	10.7%	7,410	5.0%
Legal Services	22	3.0%	128	0.8%	124	2.7%	780	0.9%	246	2.9%	2,411	1.6%
Management of Companies & Enterprises	1	0.1%	26	0.2%	8	0.2%	490	0.6%	14	0.2%	515	0.3%
Administrative & Support & Waste Management & Remediation	22	3.0%	196	1.3%	174	3.8%	1,558	1.9%	324	3.9%	3,726	2.5%
Educational Services	14	1.9%	360	2.3%	97	2.1%	1,910	2.3%	214	2.6%	11,431	7.7%
Health Care & Social Assistance	112	15.3%	8,391	54.4%	578	12.5%	34,509	41.5%	787	9.4%	44,253	29.8%
Arts, Entertainment & Recreation	10	1.4%	143	0.9%	86	1.9%	1,037	1.2%	172	2.1%	1,824	1.2%
Accommodation & Food Services	63	8.6%	1,159	7.5%	368	8.0%	7,569	9.1%	638	7.6%	11,850	8.0%
Accommodation	3	0.4%	49	0.3%	24	0.5%	378	0.5%	52	0.6%	1,021	0.7%
Food Services & Drinking Places	60	8.2%	1,110	7.2%	344	7.5%	7,191	8.6%	586	7.0%	10,829	7.3%
Other Services (except Public Administration)	87	11.9%	561	3.6%	563	12.2%	3,496	4.2%	1,050	12.6%	9,545	6.4%
Automotive Repair & Maintenance	4	0.5%	51	0.3%	55	1.2%	408	0.5%	142	1.7%	983	0.7%
Public Administration	3	0.4%	55	0.4%	31	0.7%	866	1.0%	171	2.0%	6,847	4.6%
Unclassified Establishments	29	4.0%	12	0.1%	198	4.3%	255	0.3%	393	4.7%	277	0.2%
Total	732	100.0%	15,417	100.0%	4,609	100.0%	83,221	100.0%	8,348	100.0%	148,532	100.0%

Source: Copyright 2018 Infogroup, Inc. All rights reserved. Esri Total Residential Population forecasts for 2018.
Date Note: Data on the Business Summary report is calculated using Esri's Data allocation method which uses census block groups to allocate business summary data to custom areas.

Kickapoo Corners Shopping Center



Bill Beall Co., Inc.

2921 S. National Ave., Springfield, MO 65804

(417) 887-5535 email: beall@billbeall.com

Kickapoo Corners Shopping Center



Kickapoo Corners View to the North

Kickapoo Corners View to the South



Bill Beall Co., Inc.
 2921 S. National Ave., Springfield, MO 65804
 (417) 887-5535 email: beall@billbeall.com